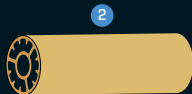
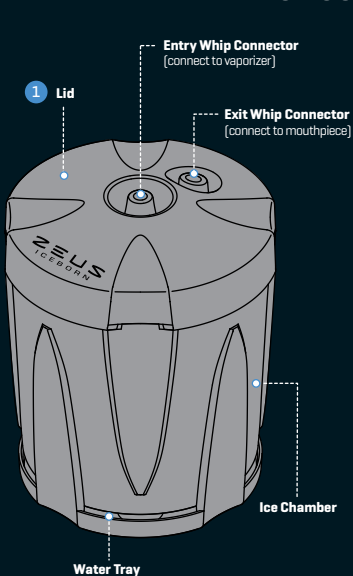


ZEUS
ICEBORN

DEVICE GUIDE



INTERNAL

1. Lid
2. Heat Exchanger Tube
3. Bottom Tube Washer
4. Top Tube Washer

EXTERNAL

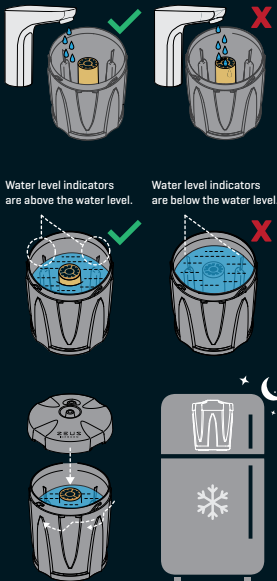
- a.1. Short Whip S
- a.2. Short Whip M
- a.3. Long Whip
- b. Mouthpiece

PREPARING THE ZEUS ICEBORN™

Slowly fill the surrounding area of the heat exchanger tube in the ice chamber with water. The water should not exceed the protruding water level indicators inside the ice chamber. When placed on a flat surface, the water level indicators should be visible above the water, by a few millimeters. If the indicators are below the water, the water level is too high and the excess water should be removed. Once filled correctly, tightly lock the lid on the ice chamber by rotating it clockwise until it falls into place. Next, place the unit into the freezer overnight. It can be kept in the freezer to be ready for use when desired.

Notes:

- Make sure there is no water inside the heat exchanger tubes, as the water will freeze and block the vapor pathway.
- Make sure the water level does not exceed the water level indicators, as the excess water may damage the device after freezing.
- The lid should be locked onto the ice chamber for the freezing process at all times and the device should be placed on a flat and safe surface in the freezer.
- When the ice chamber is left for longer periods in the freezer, some condensed ice might block the exit whip connector. If this happens, push the ice down with little force with a small tool that can pass through the opening.

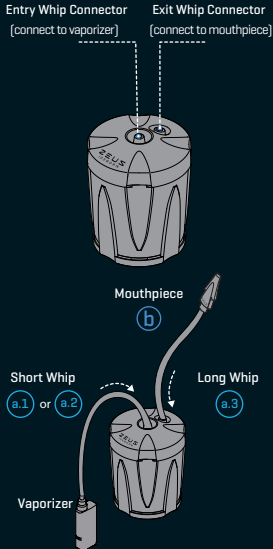


USING THE ZEUS ICEBORN™

To use the device after the water has frozen overnight, attach one of the short whips [a.1 or a.2] to the mouthpiece of your desired vaporizer and connect the other end of the whip to the entry whip connector on the lid of the **ZEUS Iceborn™**. Two short whips [a.1, a.2] of different sizes are provided in the package; these will fit most portable and stationary vaporizer mouthpieces. Use the long whip [a.3] to connect to the exit whip connector on the lid. Attach the mouthpiece [b] to the open end of the long whip. Once your vaporizer has reached the desired temperature, you are ready for the **ZEUS Iceborn™** experience!

Notes:

- Water droplets will condense on the surrounding areas of the unit during use and gather in the tray below the ice chamber. Ensure to empty this Water Tray after every few uses.
- The short whips can also be used on the exit whip connector. Though using a short whip at the exit will result in less reach for larger groups, it will greatly increase the cooling effect of the vapor.
- In order to enhance the cooling effect from the first draw, the whips can also be left to chill in the freezer.



ASSEMBLING THE ZEUS ICEBORN™

The **ZEUS Iceborn™** can be easily assembled after every cleaning session within three minutes. To do so, make sure all parts are completely dry and proceed with the following steps:

Step 1: Place the bottom tube washer on one end of the heat exchanger tube.

Step 2: Place the top tube washer into the lid of the Iceborn. Ensure the air holes on the lid and top tube washer align.

Step 3: Place the heat exchanger tube with the bottom washer tube facing down into the bottom of the ice tray, seating it in the provided space.

CLEANING THE ZEUS ICEBORN™

The **ZEUS Iceborn™** will need to be cleaned regularly for best performance. We recommend cleaning it after every few uses.

Before using the device for the first time, it is recommended to clean it in order to remove any possible manufacturing residue. All parts can easily be removed and cleaned separately.

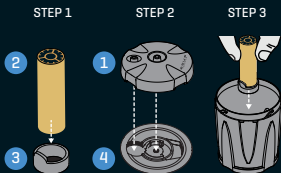
To clean the device, simply disassemble the heat exchange tube from the tube washer, and soak the tube in isopropyl alcohol for up to a maximum of one hour. This will loosen up any residue built up during use.

Then, thoroughly rinse the parts with warm water and let them drip-dry before the next use. To clean the silicone rubber whips, simply soak them in isopropyl alcohol for a maximum of one hour. Then, thoroughly rinse them with warm water.

The **ZEUS Iceborn™** ice chamber and lid are both made of food-safe plastic and are dishwasher safe. Once washed, they should be left to drip-dry before the next use. All silicone rubber parts can be replaced with new parts every three months to ensure optimal results.

Note: The silicone rubber whips and washers will slightly increase in size if they are left to soak for longer than one hour in alcohol or water. If this happens, simply let them dry for one day and they will return to their original size.

WARNING: Do not use abrasive cleaning materials on the **ZEUS Iceborn™** as soft parts may get scratched or damaged, possibly resulting in trapped odors. If this happens, the damaged pieces should be replaced with new parts.



WARRANTY

The **ZEUS Iceborn™** has a lifetime limited warranty and is guaranteed against defects in materials and workmanship. To verify the date of retail purchase by the original customer, a proof of purchase is required from a sanctioned retailer. At its discretion and to the extent permitted by law, 2334271 Ontario Limited (**ZEUS™**) will exchange the product with a product that is new, refurbished or is a functionally equivalent product, if the device develops any mechanical defects and a claim is filed within the warranty period.

The following conditions apply:

- The 1st warranty replacement is free of charge.
- For every following warranty replacement, starting from the 2nd warranty replacement, a fee of \$20 is required.

The limited warranty does not apply to normal performance degradation of materials, parts vulnerable to wear and tear or any arising damages due to the users neglect to adhere to cleaning instructions.

ZEUS™ shall not surmise any liability for damages resulting from non-adherence with the instruction manual. All devices submitted for warranty become the property of **ZEUS™**. The customer covers the shipping costs for warranty support. If you have issues with your device, send

an e-mail to **info@zeusarsenal.com** and a customer service representative will contact you as early as possible to resolve the issue and find the best solution.

EXCLUSIONS AND LIMITATIONS

The limited warranty only applies to devices manufactured by 2334271 Ontario Limited (**ZEUS™**) that can be identified by the “**ZEUS**” trademark, trade name, or logo affixed to them and were purchased at an authorized retailer who is fulfilled by an authorized distributor.

This warranty does not apply to:

- Damage caused by abuse, misuse, accident, flood, fire, earthquake, or other external causes.
- Damage caused by the use of the product outside the intended function as described by **ZEUS™**.
- A part or product that has been altered to modify capability or functionality.
- Aesthetic damage, including but not restricted to dents, scratches, deformity, and parts broken through device usage.

Warranty is non-transferable and only applies to the original purchaser. If you have purchased through a 3rd party reseller such as eBay, Kijiji, Craigslist or any other unauthorized retailer than the warranty does not apply. **ZEUS™** warranties only apply to devices purchased at any authorized retailer fulfilled by an authorized **ZEUS™** distributor. For inquiries pertaining to authorized retailers, please contact us.

Any efforts to purposely dismantle, tamper or access the internal components of the device in any fashion will void the warranty.

RETURN POLICY

Please research the device you are interested in before purchasing. Refunds can only be considered for new, unused and unopened products at the discretion and under the terms of the authorized retailer. Refund details and terms differ for each authorized retailer and must be acquired from their customer support or website. No refund can be made if the tamper-proof seal is broken or the plastic film is damaged or removed. Devices purchased through an unauthorized retailer are non-refundable from **ZEUS™**. **ZEUS™ only refunds purchases made through the ZEUS™ website.**

COUNTERFEITING

Our long-term commitment to combat unauthorized sales and counterfeiting is to ensure the quality of services from **ZEUS™**. **ZEUS™** is devoted to ensuring that our clients get the brand's up-to-date technologies, attractive form, and top-tier assistance.

ZEUS™ warns consumers to be prudent when purchasing devices from unauthorized suppliers as the quality, dependability, and safety of these products are unknown and in some cases can expose the consumer to hazards that do not

occur with genuine **ZEUS™** products.

ZEUS™ has a devoted team that actively tracks and inspects unauthorized suppliers and counterfeiters to safeguard clients and business partners. Because many people do not comprehend the worldwide influence of counterfeiting or the cycle of harm they assist when buying counterfeit goods. By discovering counterfeiters and facilitating legal action against these entities, we believe we are doing our part.

While **ZEUS™** is dedicated to aiding victims of counterfeiting, we cannot refund money used to purchase infringing products, as these products were not bought from **ZEUS™**, neither can we help in resolving disputes, including support through PayPal or credit card refunds from **ZEUS™**, nor do we assist with the resolution of disputes, including assistance with PayPal or credit card refunds.

Contact **ZEUS™** support to learn more about authorized dealers, as any product purchased outside of our exclusive sales network runs the risk of being counterfeit and is not covered under our warranty.

WARNINGS:

- Keep the **ZEUS Iceborn™** and its components out of reach from children and pets.
- Do not expose to extreme temperatures.
- Do not store near heat sources.
- Only use the device with water. Do not use any other liquid as it may damage the device.
- Do not fill water above the water level indicator.
- Do not place the device on a tilted or unsafe surface, in or outside the freezer.
- Do not try to forcefully open the lid right after taking the device out of the freezer.

DISCLAIMER:

This device is designed as an accessory, to enhance the experience for aromatherapy solutions through vaporizers. This device is not to be used with illegal substances.

The **ZEUS Iceborn™** is not intended for medical purposes.

FOR MORE PRODUCT INFORMATION



info@zeusarsenal.com
www.ZeusArsenal.com